



川源(中国)机械有限公司
GSD (China) Co., Ltd.



SRP

沉水式回流泵

SRP submersible reflux pump



SRP 沉水式回流泵

SRP submersible reflux pump



用途 Application

SRP系列沉水式回流泵是在潜水搅拌机生产技术基础上开发出的产品，该泵为二级污水处理厂混合液回流、反硝化脱氮除磷的专用设备，亦适用于污水、排污、水处理过程中微扬程、大流量场所。

The submersible reflux pump of model SRP series is a product developed on the basis of the production technique of submersible mixers, it is a special equipment used for the reclamation of the mixed liquids, denitrification, denitridation and nitrogen removal in Class II sewage treatment plant and also used in the locations which require low lift and large discharge in the ground surface water supply or drainage projects and water treatment projects.

型号说明 Type description

SRP - 10

SRP	-	10	电机额定功率 (kW)	Rated power of motor (kW)
			沉水式回流泵	Submersible reflux pump

使用条件 Usage conditions

- 介质温度：≤40°C
- 介质pH值：5-9
- 潜水深度：≤20m
- The temperature of the media shall not be higher than 40°C.
- The pH value of the media shall be 5-9.
- The maximum depth of submersion shall be 20 m.

特点 Features

- 按照微扬程、大流量的工作模式特别设计。
- 主机采用不锈钢冲压成型结构，水力性能好，效率高。
- 一体化吊装设计，可实现在水下快速安装。
- 采用双重机械密封和多重电机保护功能，提高运行可靠性。
- Special design is made to the operating mode of short lift and large discharge.
- The main equipment employs the stainless structure of the punched components, resulting in very good hydraulic performance and high efficiency.
- The integrated installation design can realize the quick underwater installation.
- The dual mechanical sealing arrangement and the multiple motor protection will improve operating reliability.



性能参数 Performance parameters

型号 TYPE	电机功率 Motor power (kW)	额定电流 Rated current (A)	叶轮直径 Dia. of impeller (mm)	防护等级 Degree of protection	绝缘等级 Insulation class	穿墙管公称通径 Nominal dia. of sleeve (mm)
SRP1.5	1.5	5.2	400	IP68	F	400
SRP2.5	2.5	7	400	IP68	F	400
SRP4	4.0	14	620	IP68	F	600
SRP5	5.0	18.2	620	IP68	F	600
SRP7.5	7.5	28	620	IP68	F	600
SRP10	10.0	32	620	IP68	F	600
SRP15	15	30/39	620	IP68	F	600
SRP18.5	18.5	36	760	IP68	F	800
SRP22	22	42	760	IP68	F	800

注：SRP15分节能型和普通型；额定电流30A是节能型，39A是普通型。

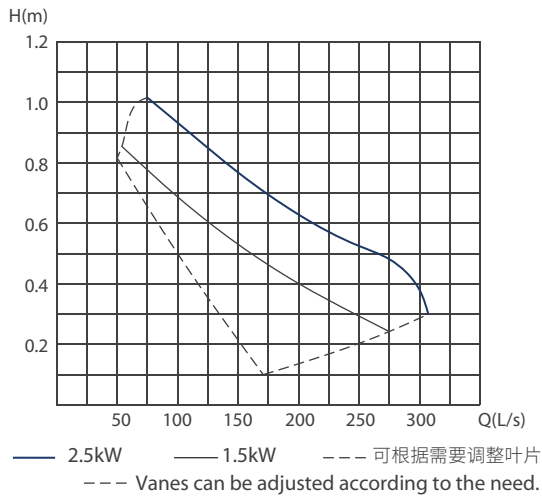
性能曲线

此曲线为泵的特性曲线，不包括扩散管和进出口的损失。

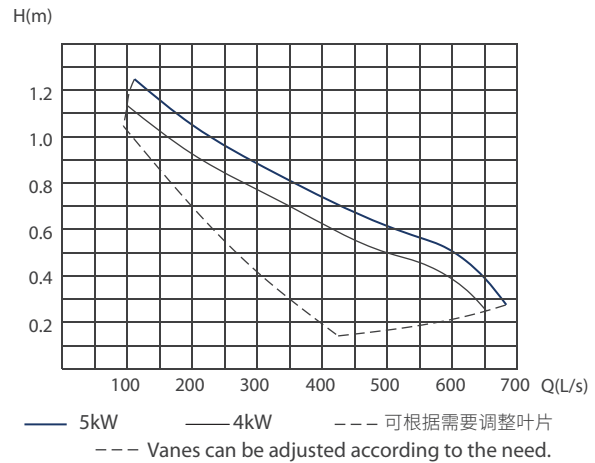
Performance curves

The curves are the characteristic curves of the pump, not including the loss of the diffusing tubes as well as the inlet and outlet.

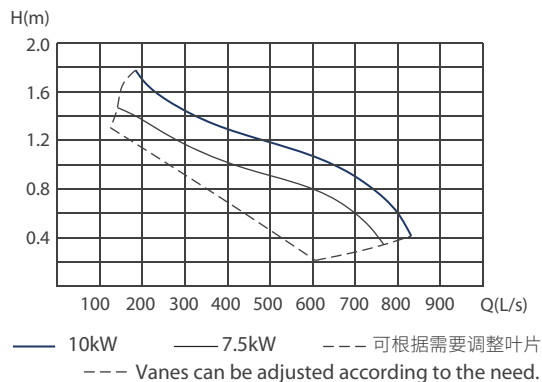
SRP1.5 SRP2.5



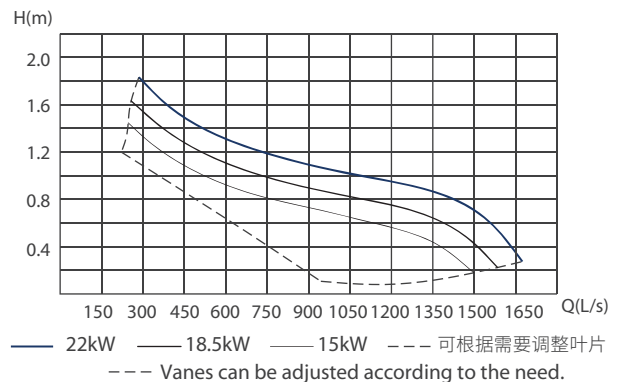
SRP4 SRP5



SRP7.5 SRP10



SRP15 SRP18.5 SRP22

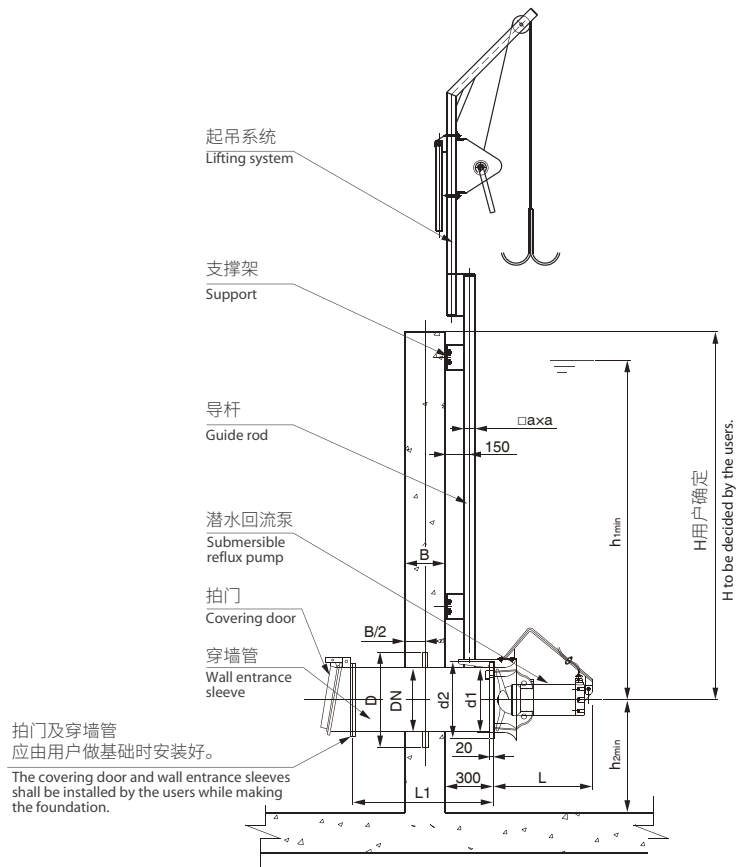


安装

特别提醒：正确安装使用是该泵长久、正常运转的基本保证。沉水式回流泵采用自动耦合安装系统，不用任何机械拆卸便可迅速提升，方便快捷。本设备除穿墙管需预埋外，导杆、起吊杆用膨胀螺栓与池体连接，无需预埋件。预埋件和拍门由用户自行采购安装。

Installation

Special warning to the users: The correct installation and usage is a basic guarantee to the long-term and normal operation of the pump. The submersible reflux pump employs the automatic coupling installation system, which facilitates quick elevation without any mechanical dismantling, hence the convenience and quickness. Apart from the wall entrance sleeves that require preembedding, the guide rod and lifting rod of the present equipment are to be connected with the pond wall with the use of expansion bolts without the need of any other pre-embedded parts. The pre-embedded parts and the covering door shall be purchased and installed by the users.



单位: (mm)

型号 Type	a	d1	d2	D	DN	L	h1min	h2min	B	L1
SRP1.5	70	406	480	600	400	620	750	350	≥380	由用户确定 To be decided by the users.
SRP2.5	70	406	480	600	400	620	750	350	≥380	
SRP4	100	632	710	800	600	840	1200	550	≥450	
SRP5	100	632	710	800	600	840	1200	550	≥450	
SRP7.5	100	632	710	800	600	920	1200	550	≥450	
SRP10	100	632	710	800	600	920	1200	550	≥450	
SRP15	100	632	710	800	600	920	1200	550	≥480	
SRP18.5	100	832	890	980	800	1260	1300	600	≥480	
SRP22	100	832	890	980	800	1380	1300	600	≥480	

本型录内容如有变更，恕不另行通知。
We reserve the right to change content without notice.

川源(中国)机械有限公司版权所有 all rights reserved. CY-J5

