



川源（中国）机械有限公司
GSD Industrial Co.,Ltd.

A photograph of a large industrial facility, likely a refinery or chemical plant, featuring several tall, cylindrical distillation columns and a complex network of silver-colored pipes and metal structures. In the background, there are large spherical storage tanks. The sky is clear and blue.

LH

蒸发冷专用泵

LH series evaporative cooling pump

LH 蒸发冷专用泵

LH series evaporative cooling pump



用途 Applications

LH系列水泵特别适用于蒸发冷凝器的配套，亦可用于以下用途：暖通空调冷热水循环系统、设备配套、高楼给水、一般工业用水、消防给水、土木施工用水、污水处理设备、农业灌溉用水、锅炉给水。

LH series pump are especially suitable for evaporative condensers For the following purposes: HVAC cold and hot water circulation system, equipment Supporting, high-rise water supply, general industrial water, fire water supply, soil wood construction water, sewage treatment equipment Furnace feed.

特点 Features

- 叶轮采用优秀水力模型设计，具有极好的动静平衡、性能稳定。
 - 泵轴与电机直接连接，同心度绝对可靠。
 - 采用进口轴承，振动小，噪音低。
 - 单吸、单级立式离心泵，用封闭叶轮及泵体。
 - 同轴直接式构造，效率高。体积小，重量轻，安装保养容易。
 - 采用机械密封，保证不损轴心，不漏水，使用寿命长。
 - 采用针式排气阀，操作简便。
- Impeller with excellent hydraulic model design, with excellent dynamic and static balance, stable performance.
 - The pump shaft is directly connected with the motor.
 - Imported bearings, small vibration, low noise.
 - Single suction, single stage vertical centrifugal pump, closed impeller and pump body.
 - Coaxial direct construction, high efficiency. Small size, light weight, installation safety easy to raise.
 - The use of mechanical seal, to ensure that no damage to the shaft, water leakage, long service life.
 - Using needle type vent, simple operation.



蒸发式冷凝器原理介绍 Evaporative condenser principle

蒸发式冷凝器是利用盘管外的喷淋水部分蒸发时吸收盘管内高温气态制冷剂的热量而使管内的制冷剂逐渐由气态被冷却为液态。

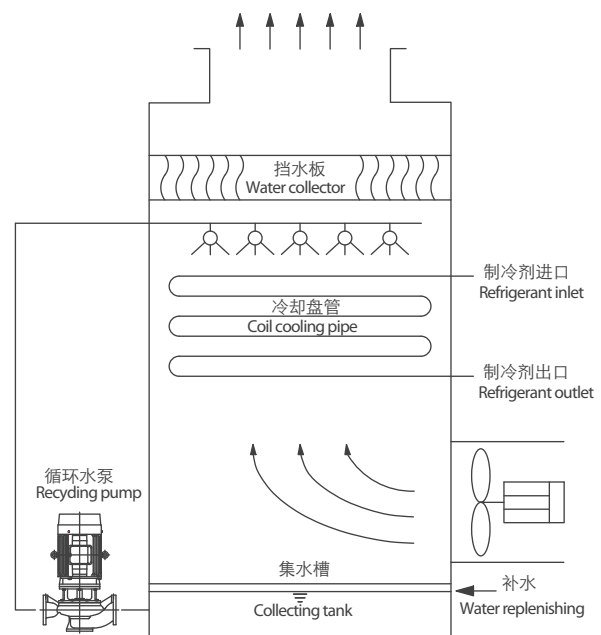
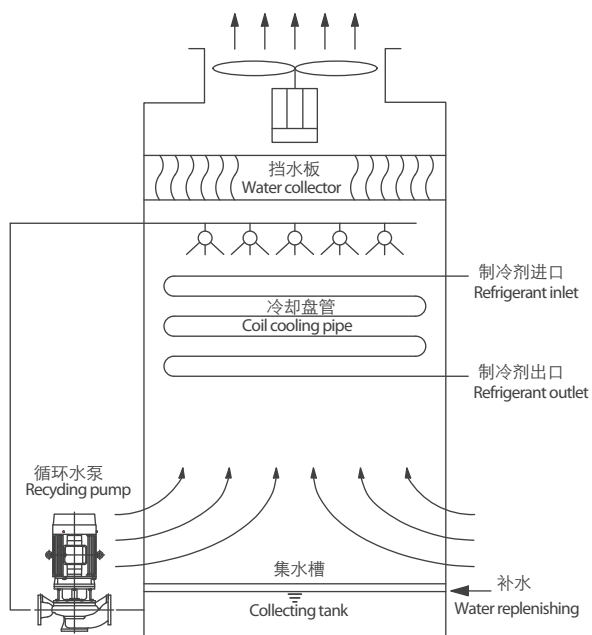
喷淋水由水泵将集水槽中的水输送到蒸发式冷凝器顶部的喷淋管，经喷嘴喷淋到冷凝排管的外表面形成很薄的水膜，水膜中部分水吸热后蒸发为水蒸气，其余落入集水槽，供水泵循环使用。

轴流风机强迫空气从顶部和侧壁下部被吸入流经盘管，填料、饱和热湿空气则被排到周围大气中，热湿空气中夹带的部分水滴通过收水器截留，有效地控制水滴飘散损失，水蒸气的飘逸率不到0.001%，散失至大气中的水蒸气在系统中由浮球阀控制补充。

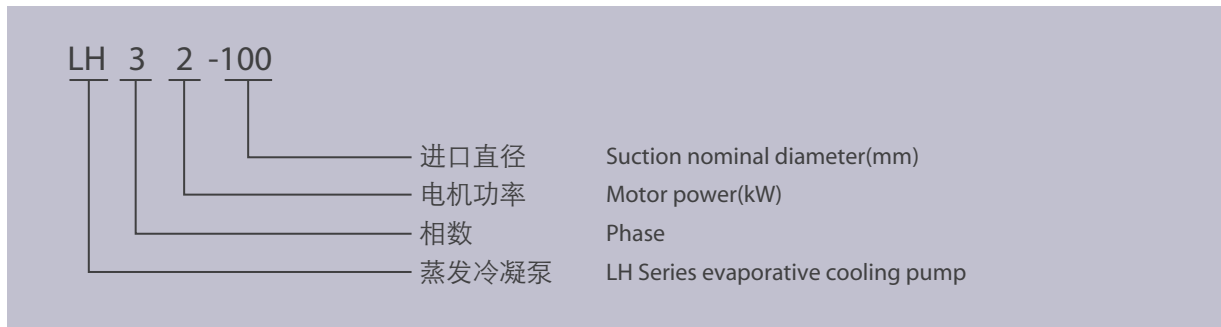
Evaporative condenser is utilizing sprayed water part outside the coil pipe to absorb the heat of high temperature gaseous refrigerant inside coil pipe through evaporation to cool refrigerant inside the pipe gradually from gaseous state to liquid state.

Sprayed water is conveyed by water pump from collecting tank to spraying pipe on top of evaporative condenser, and sprayed by the nozzle to exterior surface of condensing reed pipe to form a very thin water film, part water of which will be evaporated to vapor after heat absorption, the rest will fall to collecting tank for recycled use of water pump.

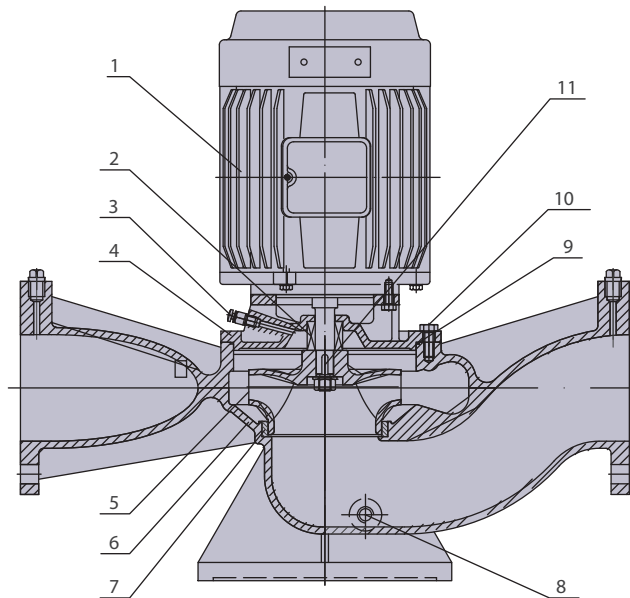
Axial-flow fan forces the air to be absorbed into and flow through coil pipe from the top and side wall, whereas hot wet air of feeding and saturate hot wet air are exhausted to ambient atmosphere, part water drops included in hot wet air are retained by water collector, for effective loss control of water drop scattering, thus scattering rate of vapor is less than 0.001%, vapor scattered and lost in atmosphere will be complemented through control of ball float valve in the system.



型号说明 Type description



结构简图 Construction

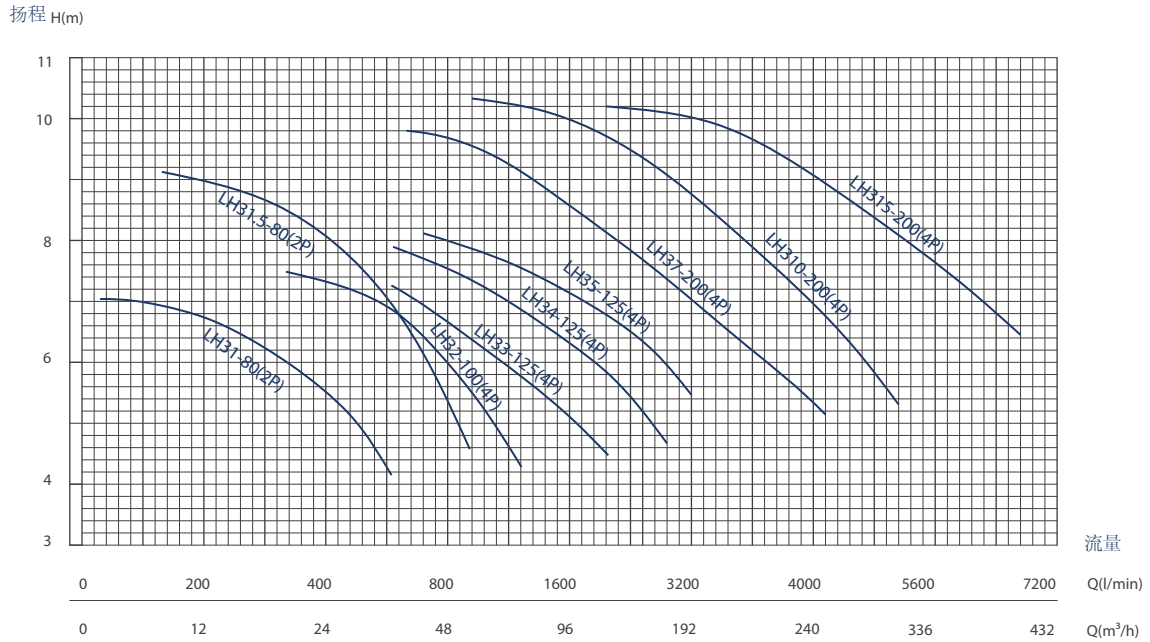


NO	名称	Name	材质 Material
1	电机	Motor	-
2	机械密封	Mechanical seal	C/Al ₂ O ₃
3	针式排气阀	Needle type veut	ZCuPb10Sn10
4	中承座	Bracket	HT200
5	叶轮	Impeller	HT200
6	泵体	Pump casing	HT200

NO	名称	Name	材质 Material
7	密封环	Seal-ring	石墨
8	丝堵	Plug	Q235A
9	O型圈	O-Ring	NBR
10	螺栓	Bolts	Q235A
11	键	Key	1Cr13



型谱图 Performance curves

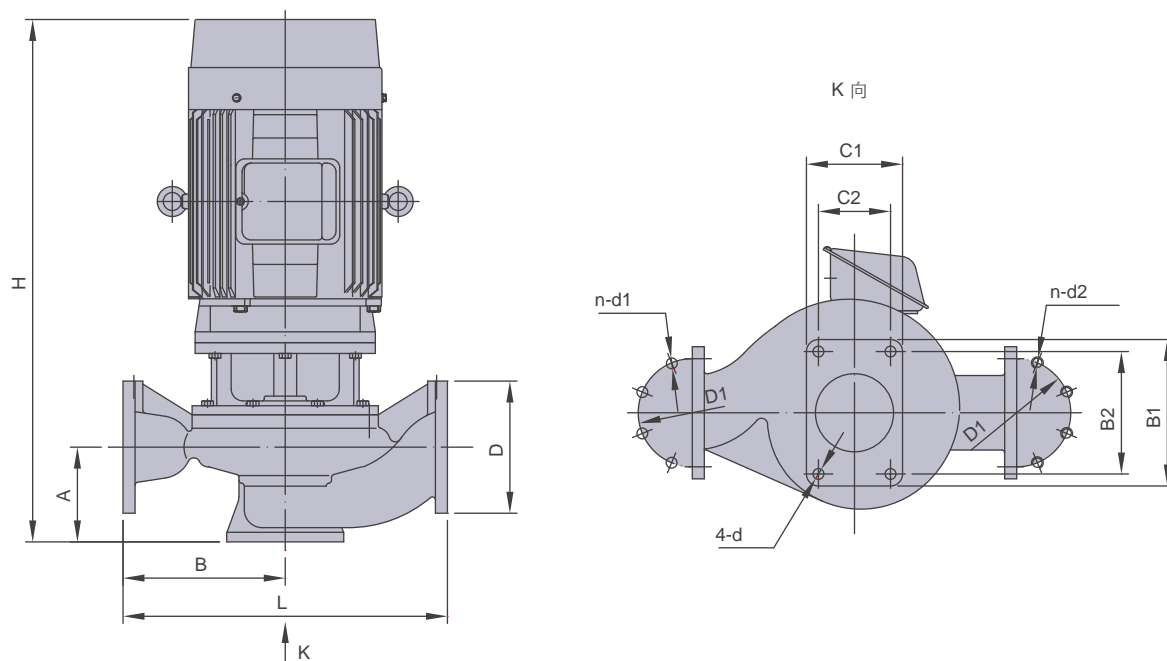


性能参数 Performance parameters

型号 Type	转速 Speed (r/min)	流量 Capacity (m³/h)	扬程 Head(m)	效率 Eff(%)	电动机功率 Motor power		必须气蚀余量 NPSHr(m)	口径 Dia(mm)	重量 Weight(kg)
					(hp)	(kW)			
LH31-80(2P)	2900	27	5	61	1	0.75	2.5	80	44
LH31.5-80(2P)	2900	45	6	62	1.5	1.1	2.5	80	49
LH32-100(4P)	1450	60	5	72	2	1.5	3.0	100	66
LH33-125(4P)	1450	100	5	73	3	2.2	3.0	125	100
LH34-125(4P)	1450	140	5.5	74	4	3	3.0	125	127
LH35-125(4P)	1450	170	6	73	5.5	4	3.0	125	145
LH37-200(4P)	1450	235	5.5	72	7.5	5.5	3.5	200	188
LH310-200(4P)	1450	280	6	73	10	7.5	3.5	200	197
LH315-200(4P)	1450	340	7.5	79	15	11	3.5	200	229



外形及安装尺寸 Installation dimensions



型号 Type	外形尺寸 Overall dimension				安装尺寸 Installation dimension				法兰尺寸 Flange size			
	L	B	H	C1×B1	A	C2×B2	4-d	D	D1	n-d1	n-d2	
LH31-80(2P)	390	195	540	200×200	180	165×165	Ø16	200	160	8-Ø19	8-M16	
LH31.5-80(2P)	390	195	540	200×200	180	165×165	Ø16	200	160	8-Ø19	8-M16	
LH32-100(4P)	600	300	562	250×250	190	210×210	Ø19	220	180	8-Ø19	8-Ø19	
LH33-125(4P)	645	322.5	668	330×330	245	290×290	Ø19	250	210	8-Ø19	8-Ø19	
LH34-125(4P)	645	322.5	685	330×330	245	290×290	Ø19	250	210	8-Ø19	8-Ø19	
LH35-125(4P)	645	322.5	685	330×330	245	290×290	Ø19	250	210	8-Ø19	8-Ø19	
LH37-200(4P)	990	480	807	450×450	312	400×400	Ø22	340	295	12-Ø22	12-Ø22	
LH310-200(4P)	990	480	845	450×450	312	400×400	Ø22	340	295	12-Ø22	12-Ø22	
LH315-200(4P)	990	480	979	450×450	312	400×400	Ø22	340	295	12-Ø22	12-Ø22	

其他 Other

我司另有GZ系列卧式蒸发冷凝泵可供选择，同时已成功开发EP6智能控制系统，可远程查询和控制水泵运行，如有需求，欢迎来电洽询。

Our company can supply GZ horizontal evaporative condensation pump as option. At the same time, EP6 intelligent control system has been successfully developed, clients can remote check & control pump operation. For more information, please feel free to contact with us!



如蒙洽询请指示下列各项：
For further details, please fulfill the chart below.

客户：
Customer _____

承办人员：
Undertaker _____

工程名称：
Name of project _____

工程地点：
Address of project _____

电话：
Telephone _____

传真：
Fax _____

* 用途 Usage	<input type="checkbox"/> 压缩用 Compression		<input type="checkbox"/> 真空用 Vacuum	
* 当地状况 Local condition	海拔m Elevation		最高相对湿度% Max relative humidity	
	当地大气压力(MPa) Local atmospheric pressure		最高气温(°C) Max air temperature	
* 气体性质 Gas character	名称 Name		温度(°C) Temperature	
	成份 Constituents		各组分比例 Ratio of constituent	
风机参数 Blower's parameter	* 风量(m ³ /min) Capacity		口径(mm) Diameter	
	* 风压(mmAq) Pressure		转速(r/min) Speed	
电机参数 Motor's parameter	型式 Type		电压(V) Voltage	
	功率(kW) Power		频率(Hz) Frequency	
	极数 Pole		其它 Others	
安装位置 Location	<input type="checkbox"/> 室内安装 Indoor install	<input type="checkbox"/> 遮雨棚式室外安装 Camping outdoor install		<input type="checkbox"/> 其它 Others _____
* 传动方式 Driving mode	<input type="checkbox"/> 皮带传动(标准型) Belt-driven(Standard)		<input type="checkbox"/> 直联传动 Direct drive	
其它要求 Other requirement				

备注：1. 以上资料请尽可能完整填写。

2. 项目前加注“*”者，请务必填写。

Notes: 1. Please fill in the parameter lists as complete as possible.

2. The item with "*" must be filled.

欢迎索取以下产品型录



泵系列

- 潜水泵系列
- 陆上泵系列
- 特种泵系列
- 消防泵系列



搅拌推流系列

- 搅拌机系列
- 推流器系列



供氧曝气系列

- 曝气机系列
- 曝气盘系列
- 曝气管系列



风机系列

- 三叶罗茨鼓风机系列
- 增压罗茨鼓风机系列
- 沉水式风机系列



污泥处理设备 及其他

- 固液分离系列
- 泡药设备
- 输送设备



川源（中国）机械有限公司
GSD Industrial Co.,Ltd.

免费咨询电话

400-657-9066

本型录内容如有变更，恕不另行通知。
We reserve the right to change content without notice.

CY-H6

